

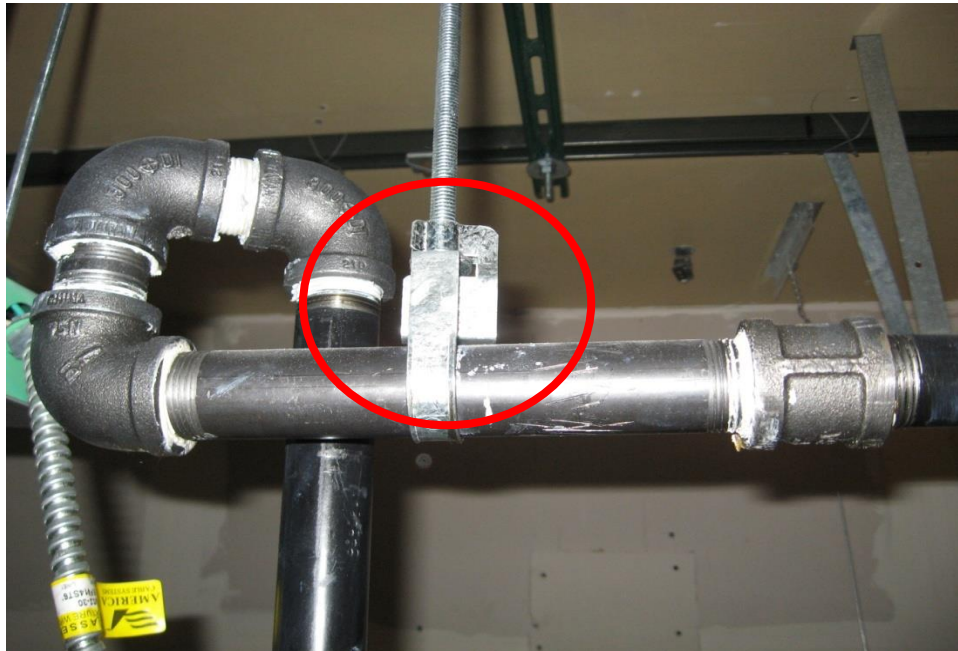


For Pendent Type Sprinkler Systems:

Per NFPA-13, End Runs of a sprinkler system that does NOT exceed 100psi shall not exceed 24" (arm over) & 36" (straight) in unsupported length for 1" pipe.



Support of straight run, on a system that does not exceed 100psi system.



Uplift Clip on an arm over on a system that exceeds 100psi system.

Per NFPA-13, End Runs of a sprinkler system that exceeds 100psi shall have a restraint for uplift & not exceed 12" (arm over) & (straight run) of unsupported length.